

Including  $\phi 5$  mm close focus type

# Infrared Temperature Sensor

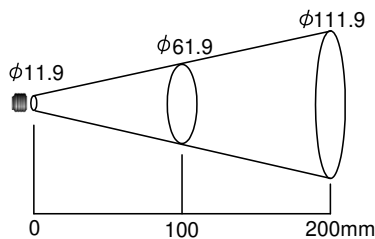
## RD-500 SERIES

- Non-contact temperature measurement
- Select from a versatile lineup
- Temperature range: 0 to 250 °C, 0 to 500 °C
- Close focus type for pinpoint measurement
- All with the same dimensions
- CE marking acquired

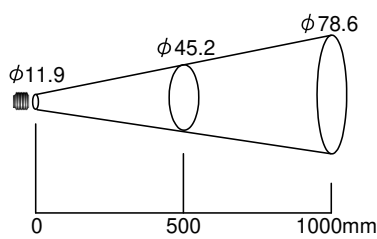


### ■ Target Spot Size versus Distance from Sensing Head

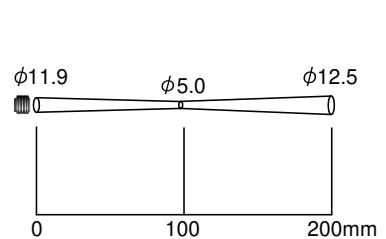
RD-502-M0 (Field of view 2:1)



RD-515-□0 (Field of view 15:1)



RD-5CF-H0 (Close focus)



**Shinko**

■ Model

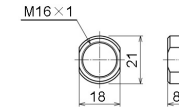
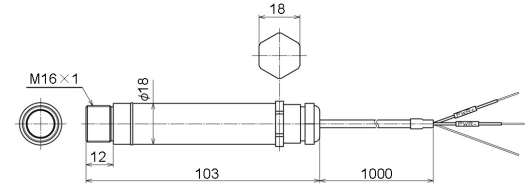
Field of View		Model	Temperature Range	Output
Field of view	2:1	<b>RD-502-M0</b>	0 to 250 °C	Current: 4 to 20 mA DC (2-wire type)
	15:1	<b>RD-515-M0</b>	0 to 250 °C	
		<b>RD-515-H0</b>	0 to 500 °C	
Close focus type		<b>RD-5CF-H0</b>	0 to 500 °C	

■ Standard Specifications

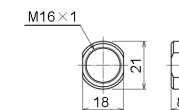
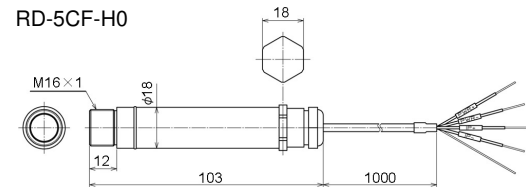
Accuracy	±1 % of reading or ±1 °C, whichever is greater
Repeatability	±0.5 % of reading or ±0.5 °C, whichever is greater
Emissivity	Fixed at 0.95 0.200 to 1.000 [When the digital indicating controller (ACS-13A-□/A) is used]
Response Time	240 ms (90 % response)
Spectral Range	8 to 14 μm
Max. Load Resistance	900 Ω (Current output) (when power supply is 24 V DC)
Supply Voltage	24 V DC (Max. 28 V DC), 25 mA
Ambient Temperature	0 to 70 °C
Ambient Humidity	Max. 95 %RH (non-condensing)
Dimensions	φ18 x 103 mm (Diameter x Length)
Weight	Approx. 100 g (including cable)
Material	Stainless steel SUS304
Mounting	Fixed using a mounting bracket (sold separately)
Drip-proof/Dust-proof	IP65
Cable Length	1 m

■ External Dimensions (Scale: mm)

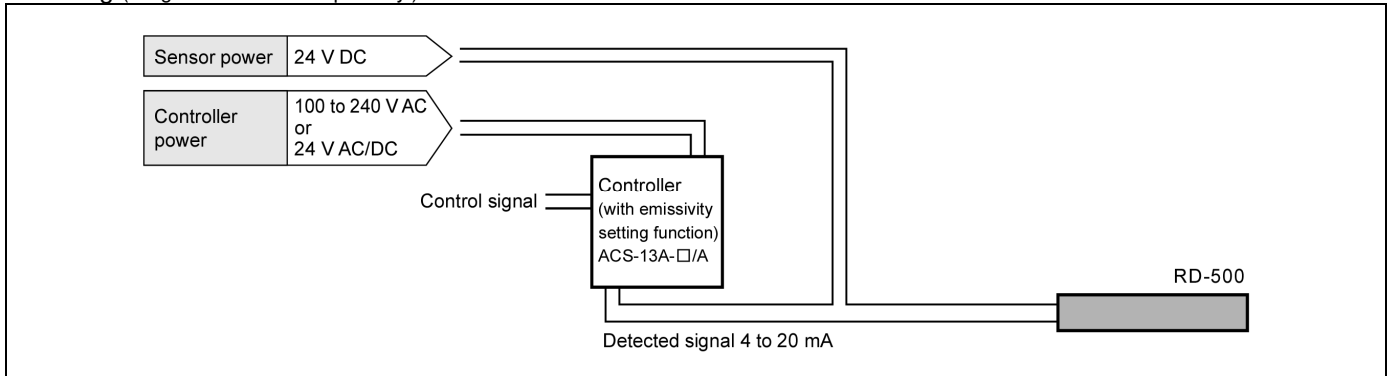
RD-502-M0, RD-515-M0, RD-515-H0



RD-5CF-H0



■ Wiring (Diagram shows example only.)



Close focus type (RD-5CF-H0) is 4-wire type, but 2 wires are not used.)

■ Accessories Sold Separately

Fixed mounting bracket (FBS)	Adjustable mounting bracket (ABS)	Air purge collar (For RD-502) (APSW)	Air purge collar (For RD-515, RD-5CF) (APSN)	24 V power supply for RD-500, RD-600 (RDP-24)	Digital indicating controller (with emissivity setting function) (ACS-13A-□/A)

**SHINKO TECHNOS CO., LTD.**  
**OVERSEAS DIVISION**

Head Office: 2-5-1, Senbahigashi, Minoo, Osaka, 562-0035, Japan

URL: <https://shinko-technos.co.jp/e/>

E-mail: [overseas@shinko-technos.co.jp](mailto:overseas@shinko-technos.co.jp)

Tel: +81-72-727-6100

Fax: +81-72-727-7006