

This manual contains instructions for functions and usage of the CME-001. To ensure safe and correct use, thoroughly read and understand this manual before using this cable. To prevent accidents arising from the misuse of the cable, please ensure the operator receives this manual.

Safety Precautions (Be sure to read these precautions before using cable.)

Caution Indicates procedures which may lead to dangerous conditions and cause superficial to medium injury or physical damage or may degrade or damage the product, if not carried out properly.

Safety Precautions

- (1) Do not confuse the direction of the USB plug when connecting to USB port of a PC. If the plug cannot be inserted smoothly, do not force it as this may damage the plug or port.
- (2) Do not bend or pull forcibly or put any heavy object on the cable.
- (3) Do not connect or remove this cable during communication. This may cause damage or malfunction.
- (4) Do not allow the metallic section of this cable to come into contact with external power terminals.
- (5) Do not handle the cable plug with wet hands. This may result in electrical shock.

Precautions

Caution

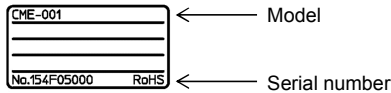
- (1) Ensure the cable is used under the following conditions:
 - A minimum of dust, and an absence of corrosive gases
 - No flammable, explosive gases
 - No mechanical vibrations or shocks
 - No exposure to direct sunlight, an ambient temperature of 0 to 50°C (32 to 122°F) that does not change rapidly, and no icing
 - An ambient non-condensing humidity of 35 to 85 %RH
 - No large capacity electromagnetic switches or cables through which large current is flowing
 - No water, oil, chemicals or where the vapors of these substances can come into direct contact with the cable
 - Ambient temperature of this cable – not the ambient temperature of the control panel – must not exceed 50°C (122°F) if mounted within the control panel.
- (2) Ensure the USB cable matches the USB port of your PC.
USB cable CUS-100 (sold separately) is recommended.
- (3) It sometimes takes time for the PC to identify the cable when this cable is connected to the PC. However, this is not a malfunction.
Be sure to confirm the COM port number before starting communication.
- (4) Use a soft, dry cloth when cleaning this cable.
(Alcohol based substances may tarnish or deface the cable.)

1. Model

1.1 Model
CME-001

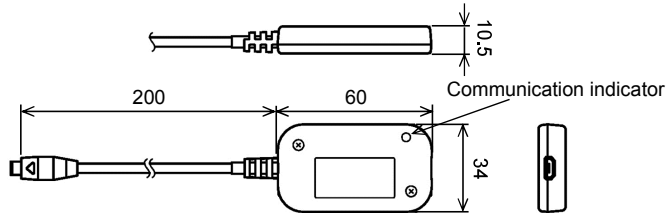
1.2 How to Read the Model Label

The model label is attached to the case.



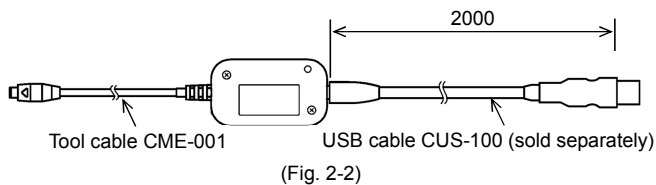
(Fig. 1.2-1)

2. Name and External Dimensions (Scale: mm)



Communication indicator (Yellow) : Lights when sending data to the instrument.
(Fig. 2-1)

When connecting the USB cable CUS-100 (sold separately)



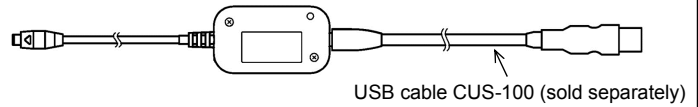
(Fig. 2-2)

3. Wiring

Caution

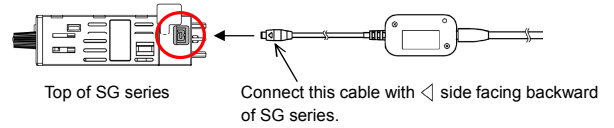
For SGD, SGDW, SGDL, SGM, SGMW, SGML, SHD, and SHDW, if a 2-wire transmitter is connected, the power cannot be supplied by this cable.
Be sure to supply power to the instruments.

- (1) Connect a USB cable (commonly used in PC USB ports) to this cable. USB cable CUS-100 (sold separately) is recommended.



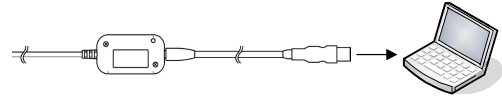
(Fig. 3-1)

- (2) Connect this cable to the Console connector at the top of the instrument. SG series is used as an example. (Fig. 3-2)



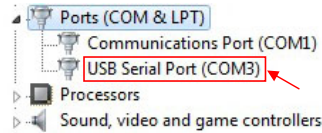
(Fig. 3-2)

- (3) Connect the USB plug of USB cable to the PC USB port.



(Fig. 3-3)

- (4) Confirm the COM port number as follows.
 - ① Click **[Start] – [Control Panel]**.
 - ② Click **[Hardware and Sound]**.
 - ③ Click **[Device Manager]**.
 - ④ If **[USB Serial Port (COM3)]** is indicated in the **[Ports (COM & LPT)]**, COM port has been allotted No.3.



(Fig. 3-4)

- (5) Close **[Device Manager]**, **[Hardware and Sound]**, and **[Control Panel]**.
- (6) Start the Console software of the instrument.
For the Console software, download it from Shinko website:
(<http://www.shinko-technos.co.jp/e/>)
For details, consult our overseas department.

4. Specifications

Rating	
USB I/F standard	Corresponds to USB Specification 2.0.
DTE speed	9600/19200/38400 bps
Socket specification	microUSB Type B
Plug specification	Specific interface connector for instrument

Operating Environment	
Operating System	Windows 7/8 (Japanese/English))
Personal computer	OS certified PC (Intel Pentium processor or compatible microprocessor) USB port equipped

General Structure	
Case material	PC
Case color	Black
Cable color	Black
Cable length	Standard length: 20 cm

Other	
Power source	Bus power (Supplied from PC via USB)
Supply voltage	5 V DC
Current consumption	200 mA max.
Ambient temperature	0 to 50°C
Ambient humidity	35 to 85 %RH (Non-condensing)
Weight	Approx. 20 g
Accessories included	Instruction manual: 1 copy
Accessories sold separately	USB cable CUS-100 (microUSB Type B – USB Type A, Total length: 2 m)